

CHANDLER HALL

Serving since 1973

Your Care is Our Calling | Living the Quaker Tradition

September 11, 2024

Grant Review Committee of the Friends Foundation for Aging

Good morning! My name is John Whitman, and I am the CEO at Chandler Hall, a Quaker based senior care facility located in Bucks County, PA. Please accept the attached application for consideration in your current grant cycle.

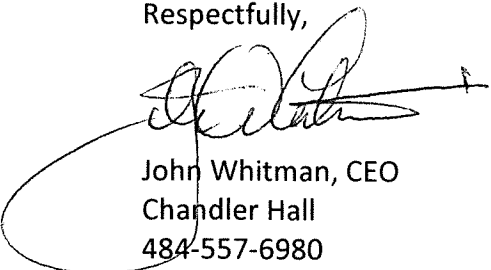
Chandler Hall is proposing a unique arrangement with Bucks County Community College (BCCC) located less than two miles from our campus, that will bring college students from multiple majors onto Chandler Hall's campus to interact regularly with your residents. While Chandler Hall, like all senior care facilities, provides regular activities for our residents, the proposed program will dramatically increase residents' interactions with students and in doing so, help further combat feelings of loneliness and depression, so common in seniors. This program will also provide benefits for the students allowing them to interact with our seniors' using skills from their chosen field of study. Expanding students training to include "hands-on" experience along with classroom learning enhances the educational benefit for students. (Please see the application for more details on the specific types of interactions this program will create)

While elevating the level of interpersonal relationships for our seniors while expand on the participating student's educational exposure, one of the goals of this program is to develop a Template from the process that other senior care facilities and colleges across the country can replicate. This specific component provides an opportunity for the benefits of this individual project at Chandler Hall to be replicated many times over allowing seniors and college students across America to benefit.

I have meet multiple times with the Dean of Bucks County Community College and he is totally committed, as I am, to making this program a tremendous success! Should you have any questions about the application, please give me a call.

On behalf of the residents at Chandler Hall and the many students from BCCC who will benefit from this program, I thank you for your time and consideration.

Respectfully,



John Whitman, CEO
Chandler Hall
484-557-6980

Friends Foundation for the Aging
New Grant Proposal Form Chandler Hall

Date: **September 10, 2024**

Organization: **Chandler Hall Health Services, Inc.**

TIN & Formal organization name: **23-2365124 Chandler Hall Health Services, Inc.**

Contact name: **John Whitman, CEO**

Phone: **267-278-7023**

Email: **jwhitman@chandlerhall.org**

Amount requested: **\$30,000**

Project title: **Creating a Replicable Program Designed to Connect College Students with Residents of Senior Care Facilities with the goal of Providing Meaningful and Beneficial Opportunities for both.**

Summary Description (maximum 25 words): **This proposal would create a model program that could be replicated across America and create an ongoing and mutually beneficial interactions between local college students and residents of senior care facilities.**

Please answer the following questions clearly and concisely.

1. What is the problem you have identified?

The Problem: There are two distinct problems being addressed in this application:

First Problem: Residents living in senior care facilities across America would benefit significantly by having more opportunities for socialization and learning. *It is well documented in medical literature that loneliness has negative effects on mental health, worsening depression, anxiety, mood disorders and cognitive decline, and on physical health, leading to higher rates of cardiovascular impairment, chronic pain, and fatigue (the Foundation for Art & Healing).* While senior care facilities do provide “activity” programs, there are so many additional opportunities and quality of life improvements that could be available to residents by fostering regular and diversified interactions with local college students. In addition to the obvious quality of life improvements for residents, providing opportunities for students to enhance their classroom learning with hands on experience will help improve their overall educational efforts. As a college professor for over 30 years of teaching, I can absolutely confirm that when actual hands-on experience is combined with classroom learning, the outcome for the student is better.

While there are obvious college majors that will lend themselves to this concept, majors in health care, social work, art, music, and even history, other majors like entrepreneurship and business can also become actively involved. For example, an entrepreneurial student wanting to test out a new business idea that involves seniors, can interact with residents to discuss and even test his/her concept. For the student, this kind of direct research is invaluable. For the seniors, being able to contribute in such a positive manner only enhances their self-image and feeling of value. This program can be mutually beneficial for both the student participants and the seniors they will be interacting with over each semester.

Second Problem: The senior care industry needs to attract/recruit new professionals to work in this growing industry. Like the nursing profession, a significant percentage of current nursing home administrators are rapidly approaching the later years of their professional career. At the same time, the number of new administrators entering the industry will not be sufficient to cover the need when more and more NHAs retire. In Pennsylvania, 73% of nursing home administrators over the age of 50. (per www.zippia.com/nursing-home-administrator-jobs/demographics).

To help address this second problem and bring new professionals into senior care services, this application will help expose college students to the many positive aspects of senior care and the opportunities for a career in this growing field. In addition, this application will help support the creation of a health care major at Bucks County Community College designed to prepare students to be eligible to sit for the Pennsylvania Nursing Home Administrators license immediately upon graduation for this two-year program. Not only will BCCC aggressively market this new major, but by exposing students to the many wonderful aspects of senior care services through the first portion of this project, it is anticipated that some will select to change majors and join the health care program.

This application is designed to address both needs... the need to create new opportunities for socialization between seniors and students while enhancing student's educational opportunities and help bring new professionals into the senior care industry in Pennsylvania.

2. What is the solution you propose to address the problem?

Solution: There are two solutions being addressed in this application:

First Solution: This project will match college students from Bucks County Community College (BCCC) (located 1.8 miles from Chandler Hall) in a variety of majors to create opportunities for students to interact with senior residents at Chandler Hall and as the program grows, reach out to other senior care facilities in the local market. Here are just a few of the potential interactions between students and seniors:

- From the Fine Arts Department, students can offer various art classes to interested seniors (i.e., painting, sculpturing, drawing)
- Students can also coordinate art shows at Chandler Hall for the resident's enjoyment
- Students from the photography program can host an annual "Photo Contest" at Chandler Hall with various categories designed to highlight:
 - The positive side of aging
 - Resident and staff interactions
 - Resident and family interactions
 - Residents' interactions with other residents
- Students from the videography program can host an annual short film contest focusing on the Amazing Stories from the lives of the residents of Chandler Hall.
- Music Department students can offer lessons to interested seniors and provide regular performances for the residents to enjoy.
- Marketing, business and entrepreneurial majors can work with residents and Chandler Hall's management team to address real life projects that will further their academic education while exposing them to the senior care industry in hopes of impacting their potential career path

Second Solution: The second solution is designed to address the growing need to attract new professionals into the senior care industry. This will be addressed by Bucks County Community College evaluating the potential of creating a special Health Care Major with a focus on senior care services designed to prepare students to be eligible to take the Pennsylvania Nursing Home Administrators Licensing Exam immediately upon graduation. The starting salary of nursing home administrators in Pennsylvania is over \$60,000 a year which is greater than the current average starting salary of graduates from the college at large.

3. What actions will you take?

Preliminary Steps already taken: In researching the feasibility of this program, I have reached out and met with the following organizations who have all expressed their support and interest in being involved in the program discussed above:

- **Bucks County Community College:** Bucks County Community College is a public community college in Bucks County, Pennsylvania offering 73 distinct undergraduate degrees, concentrated into 59 majors within 27 broad fields of study. ([Bucks County Community College — Think Smart](#)) I have met with both the new President of Bucks County Community College (Dr. Patrick Jones) and the provost (Dr. Kelly Kelleway). They see the benefits of this program and are supportive as evidenced by the Dean's attached Letter of Support.
- **Bucks County Health Improvement Partnership (BCHIP):** This is a local organization dedicated to supporting health care facilities in Bucks County, PA. ([Bucks County Health Improvement Partnership | Newtown, PA | Home \(bchip.org\)](#)) I have met with the Executive Director of this program (Kimberly M. Everett, BS, MA) and she immediately recognized the benefits this kind of program can bring. While the initial phase of this program will focus on utilize Chandler Hall as the test site to build a replicable model, it is fully expected that as the number of students wanting to participate in this program exceeds the need at Chandler Hall, that additional sites will be needed. There are 31 skilled nursing facilities in Bucks County and as this program grows, additional SNFs can be included. BCHIP will help identify additional facilities as that demand grows. Please see the letter of support for this initiative from the Executive Director of BCHIP.
- **LeadingAge, PA:** LeadingAge PA is a professional trade organization representing non-profit senior care facilities throughout Pennsylvania. ([LeadingAge PA | Pennsylvania Association for Senior Services Providers | LeadingAge PA](#)) I have met with the President and CEO of LeadingAge PA (Garry Pezzano), and he has offered to support this program, especially in helping BCCC in creating a health care major focused on preparing nursing home administrators. Please see the attached Letter of Support from LeadingAge PA.

4. Describe the population to be served.

This program is designed to serve several specific populations including:

- **Senior Residents at Chandler Hall:** This program is designed to initially provide additional socialization and learning opportunities for the residents of Chandler Hall, located in Newtown, Pennsylvania. As the program grows however, it is fully anticipated that many of the other 31 skilled care facilities in Bucks County will be included. In addition, because one of the goals of this initiative is to create a template to assist other long term care facilities and colleges create their own programs, the number of both seniors and students this program could ultimately impact is extremely large.
- **Students from BCCC:** Offering college students the opportunity to expand their classroom academic learning with hands-on interactions with seniors will significantly enhance their learning experience. It is also hoped that by exposing these students to the senior care industry, some will select to make senior care their professional focus. Finally, because of the template that will be created as part of this project, the potential for these student benefits to expand well beyond Buck County Community College and potentially impact college students across America is very real.

5. Are there partners/collaborators for implementation or funding-who?

Yes, the following organizations are actively involved in this initiative and have submitted Letters of Su

- Bucks County Community College
- Bucks County Health Improvement Partners
- LeadingAge PA

Both Chandler Hall and Bucks County Community College will each be contributing to the ongoing success of this project after the initial funding from the Friends Foundation for Aging has been exhausted. Please see the attached three-year budget for this initiative.

6. Has the solution been tried by other organizations?

There are two universities across the United States, one in Boston and one in Arizona, who have built retirement communities directly on college campuses. I have reached out to both organizations, and they are not applicable to the model described in this application. For one thing, they are both relatively new (within two years) and are much larger than local skilled nursing facilities. In addition, their resident population is much younger than the average age of residents in Bucks County's senior care facilities. As a result, I believe this is the first model designed to link colleges and long-term care facilities for the direct purpose of bringing additional socialization for residents and expanded learning opportunities for students. As stated, one of the goals of this initiative is to create a template of the program developed for other senior care facilities and colleges across the country to replicate.

7. How will you know your actions are having an impact? How will you measure outputs and outcomes?

As part of this project, we will be documenting student and resident group sessions as well as individual interviews during the first year of operations. It is our goal to publish this information along with the template created with the hope that other senior care facilities and colleges across the country will replicate the model further expanding the benefit of this grant.

Include a simple program budget in the same pdf with expected income and expenses (i.e., staff, program supplies, travel, etc.) **See attached three-year budget.**

Attach a copy of your IRS determination letter. We may also look at your website, your Guidestar (Candid) profile and your IRS Pub 78 non-profit status or plan a site visit. Please make sure these are up to date

Respectfully submitted,



John Whitman, MBA, NHA
CEO
Chandler Hall
267-278-7023
jwhitman@chandlerhall.org

Friends Foundation for Aging

Grant Title: *Creating a Replicable Program Designed to Connect College Students with Residents of Senior Care Facilities with the Goal of Providing Meaningful and Beneficial Opportunities for Both*

Funds Requested: \$30,000

Use of Funds:	Year 1	Year 2	Year 3
Chandler Hall Coordinator (1)	\$10,000	\$2,500	\$2,500
BCCC Coordinator (2)	\$10,000	\$2,500	\$2,500
Student Coordinator(s) (3) Split between CH & BCCC	\$5,000	\$5,000	\$5,000
Oversight/Coordination (4)	\$5,000	\$2,500	\$2,500
Totals	\$30,000	\$12,500	\$12,500

Total 3 Year Funding

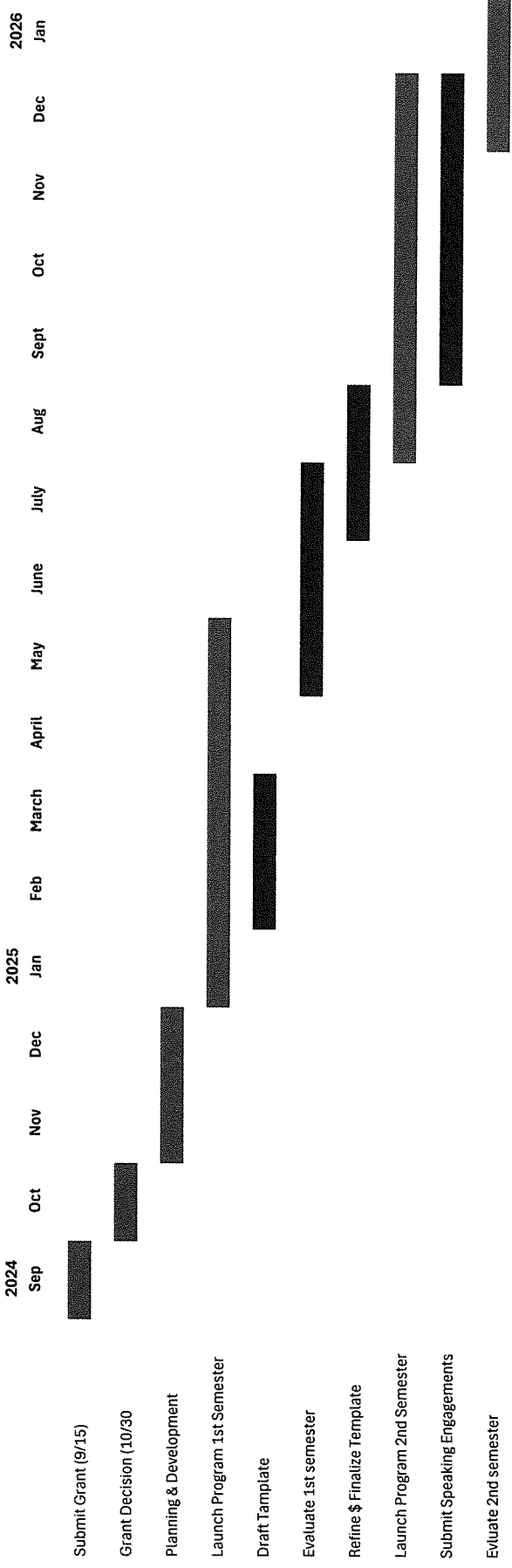
Total Grant from Friends:	\$30,000
Total from Chandler Hall	\$12,500
Total from BCCC	\$12,500
Total Funding for 3 Years	\$55,000

- Chandler Hall Coordinator (1)** An individual from Chandler Hall's administrative staff will be selected to oversee this program to include working with the Coordinator from Bucks County Community College. Duties will include the initial planning, developing the structure and process, implementing a review process and the creation of a template that will allow other senior care facilities and colleges to successfully replicate the program. The coordinator will receive a \$10,000 stipend in year one from the funds received from the grant. In years 2 & 3 that stipend will be \$2,500 a year and be the responsibility of Chandler Hall to support in either cash or in-kind contributions.
- BCCC Coordinator (2)** An individual from BCCC's administrative staff will be selected to oversee this program to include working with the Coordinator from Chandler Hall. Duties will include the initial planning, developing the structure and process, creating a review process and the creation of a template that will allow other senior care facilities and colleges to successfully replicate the program. The coordinator will receive a \$10,000 stipend in year one from the funds received from the grant. In years 2 & 3 that stipend will be \$2,500 a year and be the responsibility of BCCC to support in either cash or in-kind contributions.
- Student Coordinators (3)** Each semester, one or more students will be selected as the Student Coordinator(s) and be responsible for marketing the program across campus and securing volunteers from multiple departments to participate in this program. The student coordinator will receive a stipend for supporting this effort. A total of \$2,500 per semester or \$5,000 a year has been allocated to offer as a stipend. As part of the planning process, the coordinators from Chandler Hall and Bucks County Community College will determine if there needs to be one or more student coordinators for this program. This stipend will be paid from the grant in the first year. Chandler Hall and BCCC will jointly assume responsibility for this stipend in years 2 and 3 and can be paid either as cash or in-kind contributions.
- Oversight/Coordination (4)** Both Chandler Hall and Bucks County Community College will assign a senior level staff member to oversee this project and the efforts of the two facility coordinators. These individuals will provide guidance and oversight to assure the project is effectively designed, implemented and evaluated. Both Chandler Hall and Bucks County Community College will receive a \$2,500 stipend in year one for this effort. This stipend will be paid as part of the initial grant funding. In year 2 and 3, Chandler Hall and BCCC will each provide the \$2,500 per year as an in-kind contribution.

Estimated Time Line

Grant Submitted to the Friends Foundation for Aging on September 15, 2024

Grant Title: Creating a Relicable Program Designed to Connect College Students with Residents of Senior Care Facilities with the Goal of Providing Meaningful and Beneficial Opportunities with the Goal of Providing Meaningful and Beneficial Opportunities for Both



Note: Assuming a November start date (based on this grant being approved in October 2024) Year 1 will actually run for 14 months to allow for planning and development of the program. Year 2 will begin in January of 2026 and Year 3 will begin in January of 2027. Year 2 and Year 3 will run for 12 months each.

Prepared by John Whitman 8-28-24



**Bucks County
Community College**

275 Swamp Road
Newtown, PA 18940-4106
(215) 968-8221
Fax: (215) 968-8129

Office of the President & CEO

11 September 2024

To Whom it May Concern,

This is a letter of support for the application by John Whitman, CEO of Chandler Hall Health Services.

As outlined in the grant proposal application, Bucks County Community College is prepared to partners with him in meeting our commitments as outlined. We would whole-heartedly promote these opportunities among our students and provide appropriate assistance to help them be successful.

We believe this program would have a positive impact on the residents of Chandler Hall and our students. If successful, this could be a model program that is replicated nationally.

Please feel free to contact me if you have any questions or need additional information.

Sincerely,

A handwritten signature in black ink, appearing to read "Patrick M. Jones".

Patrick M. Jones, Ph.D.
President & CEO



BCHIP

Bucks County Health Improvement Partnership

Improving Health ~ Enhancing Lives

BOARD MEMBERS:

David Damsker, MD, MPH
Board Chair
Director, Bucks County Health Department

James Brexler
Board Vice Chair
President & CEO, Doylestown Health

Charles T. Field
Board Treasurer
CFO & Executive Vice President
Penn Community Bank

Felicia Ganther, J.D., PhD.
Community Member

Vail P. Garvin, DPA, FACHE
Board Secretary
Community Member

Mark Hoffman, Ed.D.
Executive Director
Bucks County Intermediate Unit

Doug Hughes, BSN, MBA
President & CEO
Grand View Health

Michael Magro, Jr., DO, MBA, FACOI
President
Nazareth Hospital/St. Mary Medical Center

Marion E. Mass, MD
Bucks County Medical Society

Michael Motte, MBA
Chief Executive Officer
Lower Bucks Hospital/Suburban Community
Hospital

Rachel Neff, LSW
Director of Human Services
County of Bucks

Dennis Pfeleger
President
St. Luke's University Health Network
Upper Bucks Campus

Deborah Staples
VP/Hospital Administrator
Jefferson Bucks Hospital

NON-VOTING:
Kimberly M. Everett, BS, MA
Executive Director

September 9, 2024

Letter of Support

I am submitting this Letter of Support for the grant application being submitted to the Friends Foundation to develop a mutually beneficial program to help decrease loneliness and feelings of isolation for residents of senior care facilities while also enhancing the educational opportunities for college students from multiple majors.

This program will be developed by Chandler Hall and Bucks County Community College. Both organizations recognize the benefits of this program and are committed to making it a success.

In addition, one of the goals of this program is to create a step-by-step process that will allow other senior care facilities and colleges across the country to replicate this program further expanding the benefits of this program for even more seniors and more students.

As the Executive Director of the Bucks County Health Improvement Partnership, which serves the 31 senior care facilities in Bucks County PA, I recognize the benefits that will be generated from this program and especially the creation of a template allowing the benefits to be spread to other senior care facilities and colleges across America.

Please accept this letter as my total support of this application!

If you have any questions, please do not hesitate to contact me.

Respectfully,

Kimberly M. Everett, BS, MA
Executive Director

41 University Drive, Ste. 101

Newtown PA 18940

267-291-7882

WWW.BCHIP.ORG



1100 Bent Creek Boulevard, Mechanicsburg, PA 17050
O: 717-763-5724 | F: 717-763-1057 |
www.LeadinAgePA.org

September 9, 2024

Friends Foundation for the Aging
P.O. Box 1081
Langhorne, PA 19047

Dear Grant Review Committee,

I am reaching out on behalf of LeadingAge PA, the professional association supporting mission-driven aging services providers in Pennsylvania. We represent over 400 providers across the Commonwealth.

As President and CEO of LeadingAge PA, I express my support of a grant application being submitted by Chandler Hall, one of our member communities. Chandler Hall is collaborating with Bucks County Community College to propose a program that offers a unique approach to combating loneliness and isolation among residents. It also aims to introduce students to potential career paths within the aging services sector. With the development of the program and the goal to create a template using their efforts, other aging services providers and colleges across the country would have a model to develop similar programs. The proposed model uses college students to help reduce or eliminate loneliness and isolation among seniors, well-documented issues for senior care communities worldwide, while enhancing students' educational experience.

LeadingAge PA is supportive of this initiative because of the far-reaching impact it can have. It will benefit not only the residents of Chandler Hall and the students at Bucks County Community College but also residents, students, and aging services providers across the country. LeadingAge PA would happily share the template created from this program with our members across the state, as well as other communities across the country, through the national LeadingAge association.

Please accept this letter as my support for this application.

Respectfully,